

# Flip-Up Produce Rail Installation for Magellan™ 8400 & 8300 Scanner-Scales

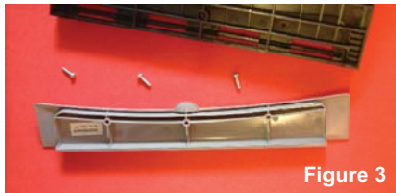
These instructions provide the process for removal of a stationary rail and installation of a “flip-up” Produce Rail, Datalogic Part Number 10-5398.

## Installation Procedure:

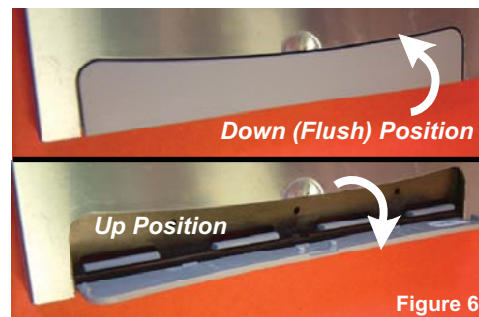
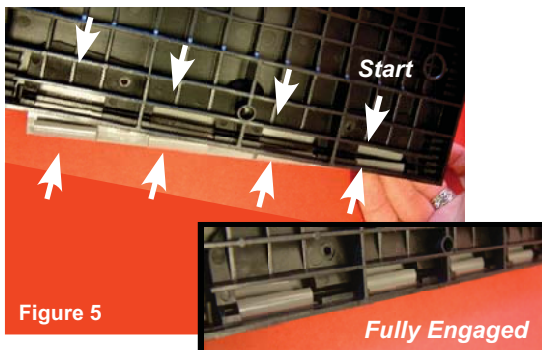
Remove the Top Platter assembly from the scanner and confirm the presence of the stationary fruit rail. (See Figure 1.) Turn the platter upside down and locate the three phillips head screws which secure the fruit rail to the platter. (See Figure 2)



Remove the three screws and the stationary fruit rail. (See Figure 3) Set the screws and the fruit rail aside as they will not be required for the installation of the “flip-up” produce rail. Put the replacement “Flip-up” produce rail (4-4593-01) in position upside down near the front of the platter as shown in Figure 4.



Starting at one end of the rail, snap the hinge hooks on the rail over the cast hinge pins on the platter sub structure and work across the edge of the platter until fully engaged. (See Figure 5). Turn the platter right side up and flip the rail up and down to ensure correct installation. (See Figure 6).



R44-3164 (Rev. A)