



Bezel Installation Instructions

Magellan™ 3200VSi

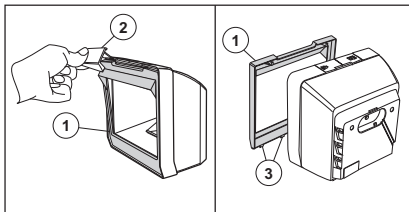
The Front Bezel is a plastic frame which encases the edges of the scan window.

Removing the Front Bezel

Use a tool or object which will not scratch or otherwise damage the window or plastics to gently lever the top edges of the Front Bezel to free it from the Front Enclosure. The illustration shows the plastic Cable Cover being used for this task.

Replacing the Front Bezel

Tilt the bottom of the Front Bezel toward the scanner to align its tabs with the corresponding holes near the bottom of the scan window in the scanner. Seat them in place in the holes, then gently press in on the face of the Front Bezel, just below the light pipe, to fully seat it.



1. Front Bezel
2. Lever apart using a non-scratching object, such as the Cable Cover as shown.
3. Tabs

